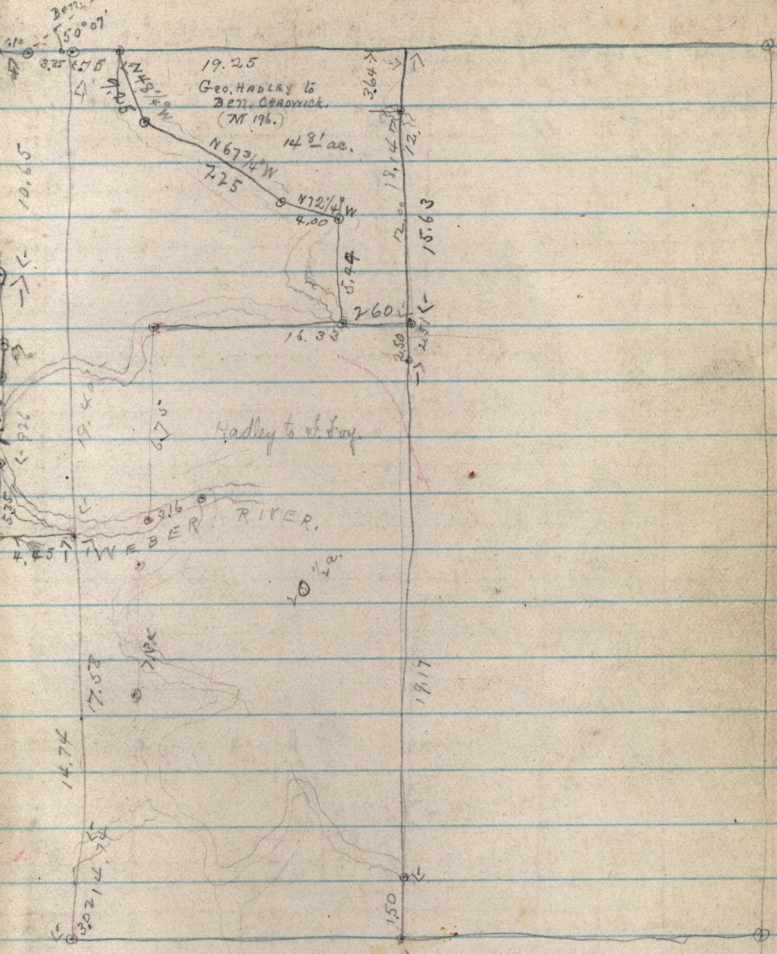


N 1/2 of this 1/4 Sec partd by Geo. Hadley, T-508 -

Dec 29-1876.

S W 1/4 Sec 10 T6NR2W



Hadley to Ammon Green - Beg. 19.25 ch S. N. 1/4 cor. 1/4 Sec. and on bank of  
 Weber River, thence up the channel of river to point S. of leg. 17.53 ch to  
 leg. 17.45 ac. Also Beg. 20.00 ch E. + 1.50 ch N. S. W. cor. said 1/4 Sec. thence N. 7.00 ch  
 to channel again, thence down said channel to a point W. of leg. E. 10.25 ch to  
 leg. contain 3.55 ac more or less. (Q 384)

to S. cor. Beg. 18.14 ch S. + 20.00 E. N. W. cor. said 1/4 N. 7.25 W. 16.53 S. 6.75  
 To Weber River thence up the channel of river to point 3.02 ch W. + 7.59 N  
 from S. W. cor. said 1/4 Sec. S. 7.34 ch to mid stream thence up the river  
 to a point 1.50 N. from S. E. cor. of W 1/2 of said 1/4 Sec. 17.07 ch to  
 leg.